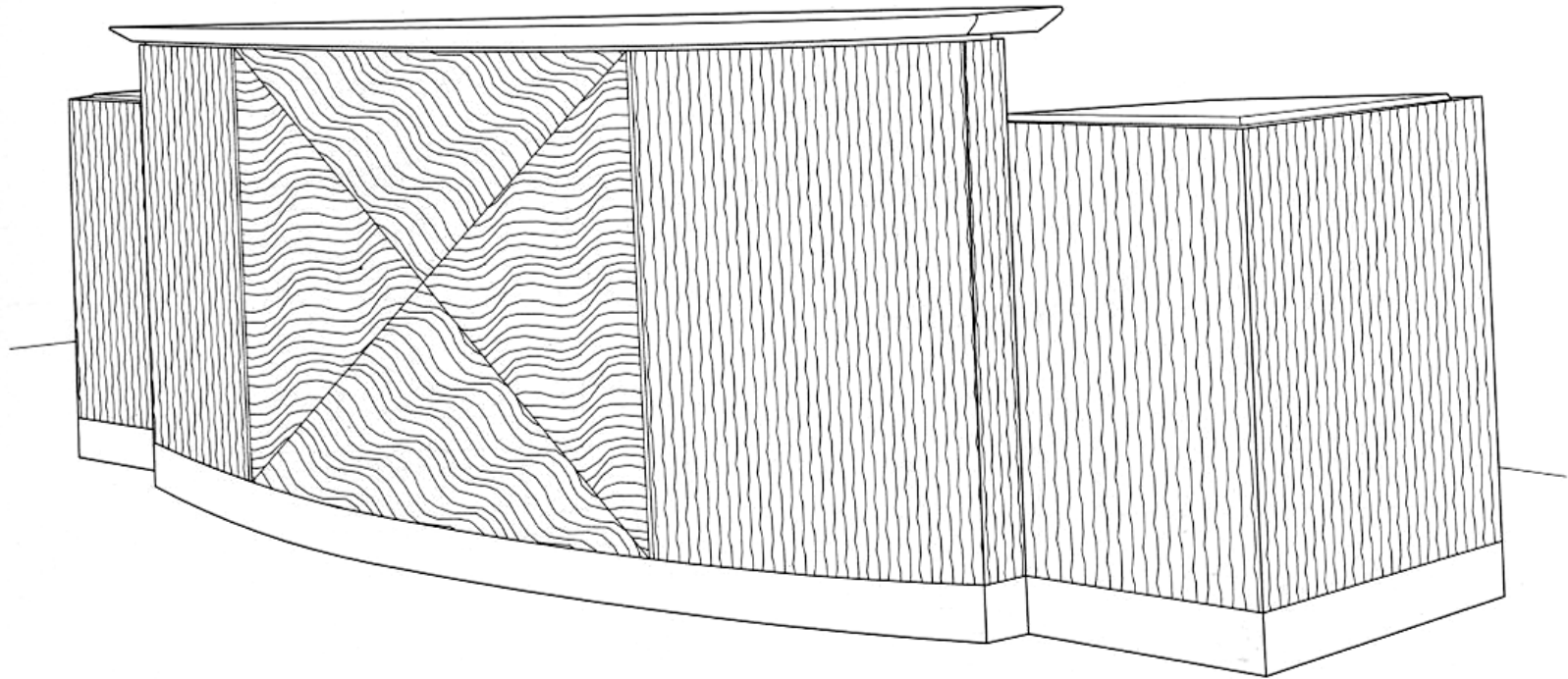




DETAILING A RECEPTION DESK

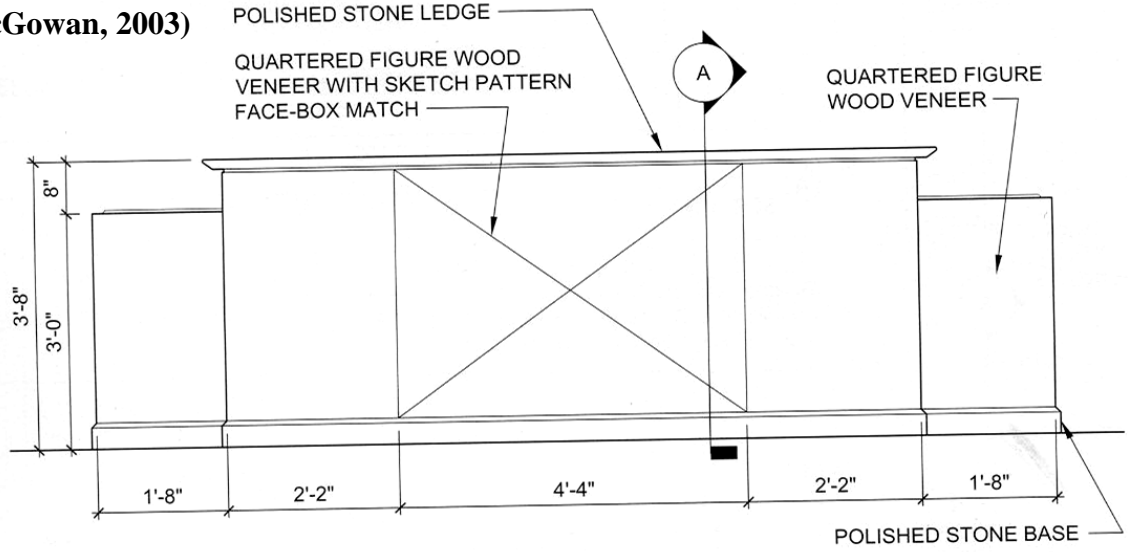
EXAMPLES



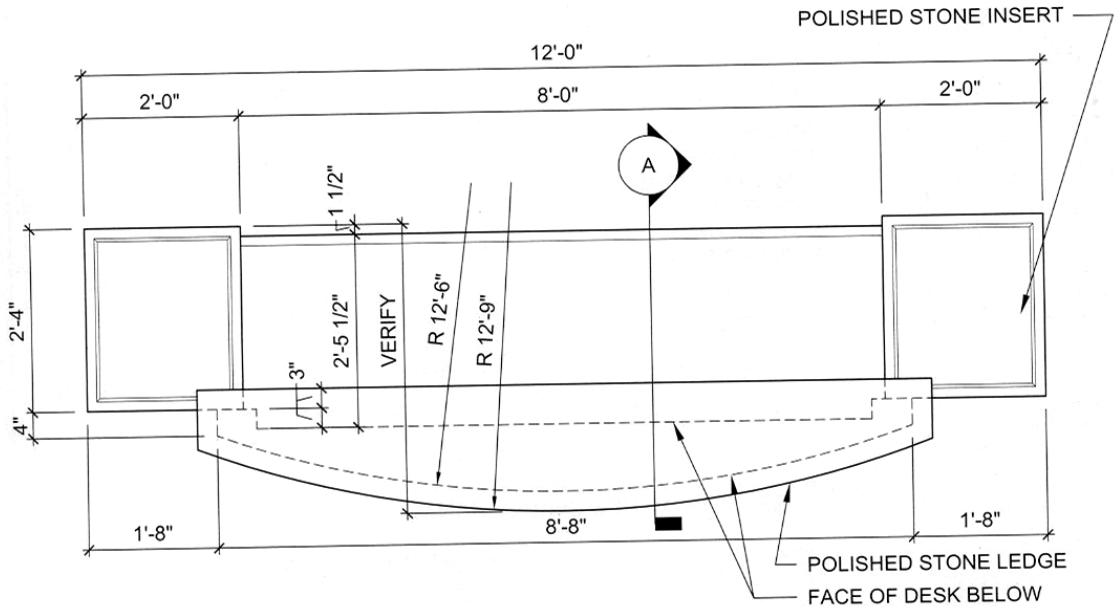
*Project: AFLAC Customer Service Center; Columbus, Georgia
Designer: Hecht, Burdeshaw, Johnson, Kidd & Clark; Columbus, Georgia
Woodworker: Columbus Cabinet Company; Columbus, Georgia
Source: Design Solutions, Winter 2000*

(McGowan, 2003)

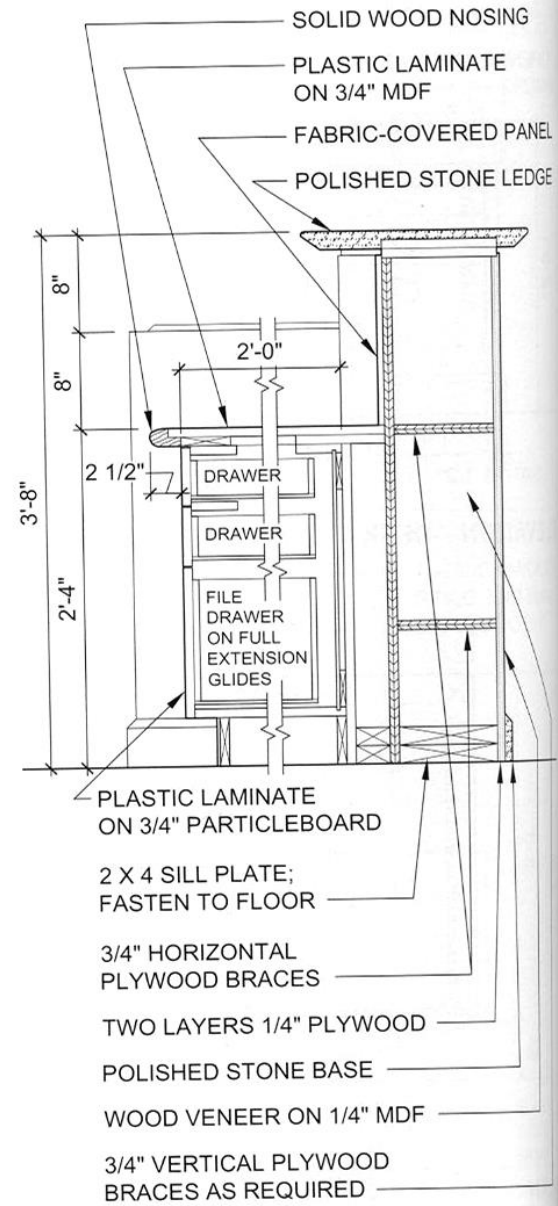
(McGowan, 2003)



FRONT ELEVATION



PLAN



A SECTION

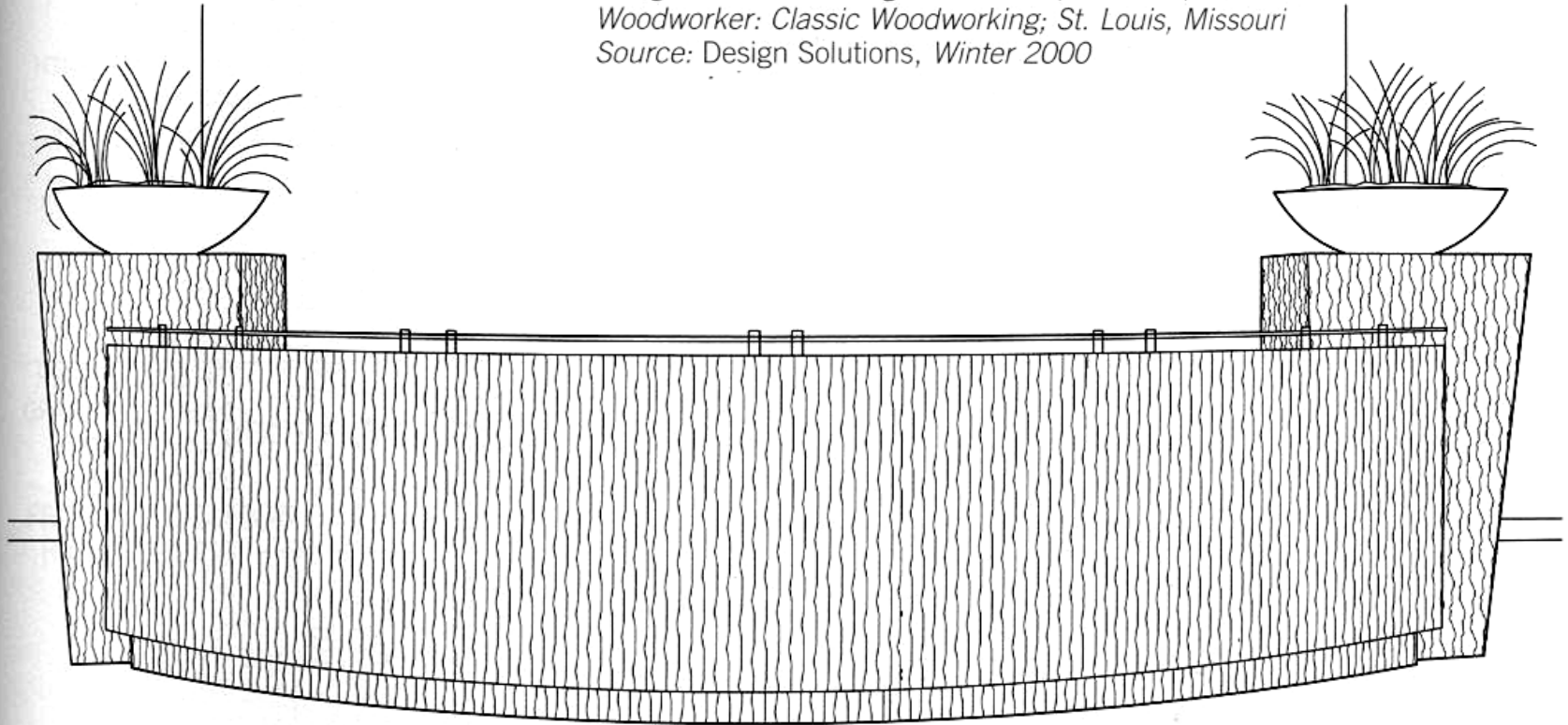
RECEPTION DESK

*Project: St. Louis Rams Training and Administration
Complex; Earth City, Missouri*

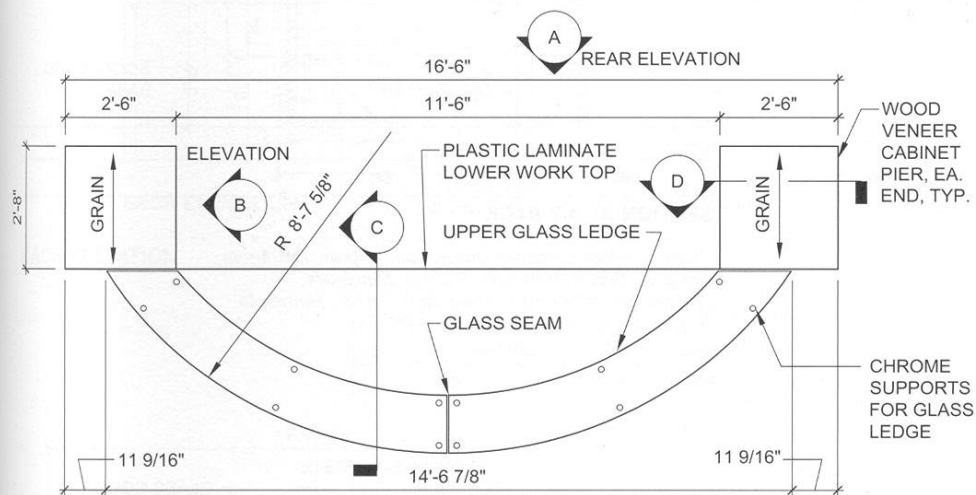
Designer: O'Toole Design Associates; St. Louis, Missouri

Woodworker: Classic Woodworking; St. Louis, Missouri

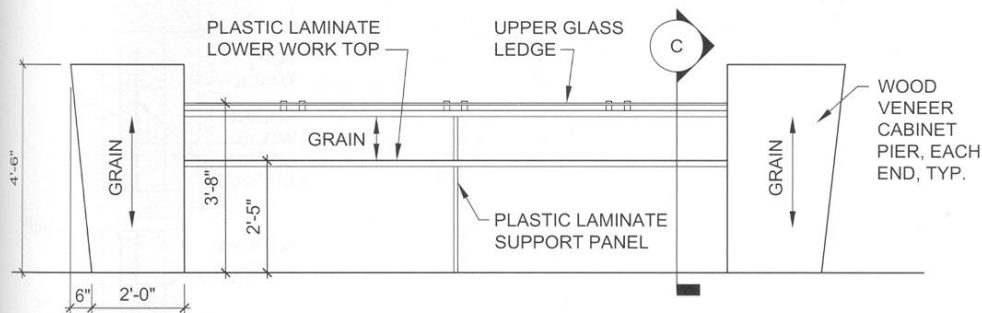
Source: Design Solutions, Winter 2000



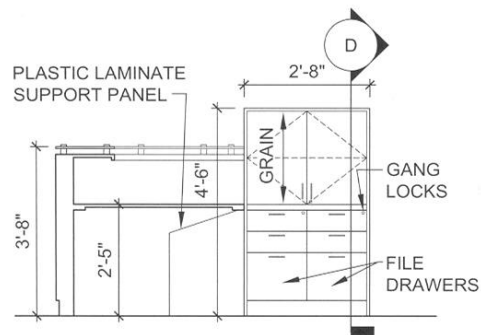
(McGowan, 2003)



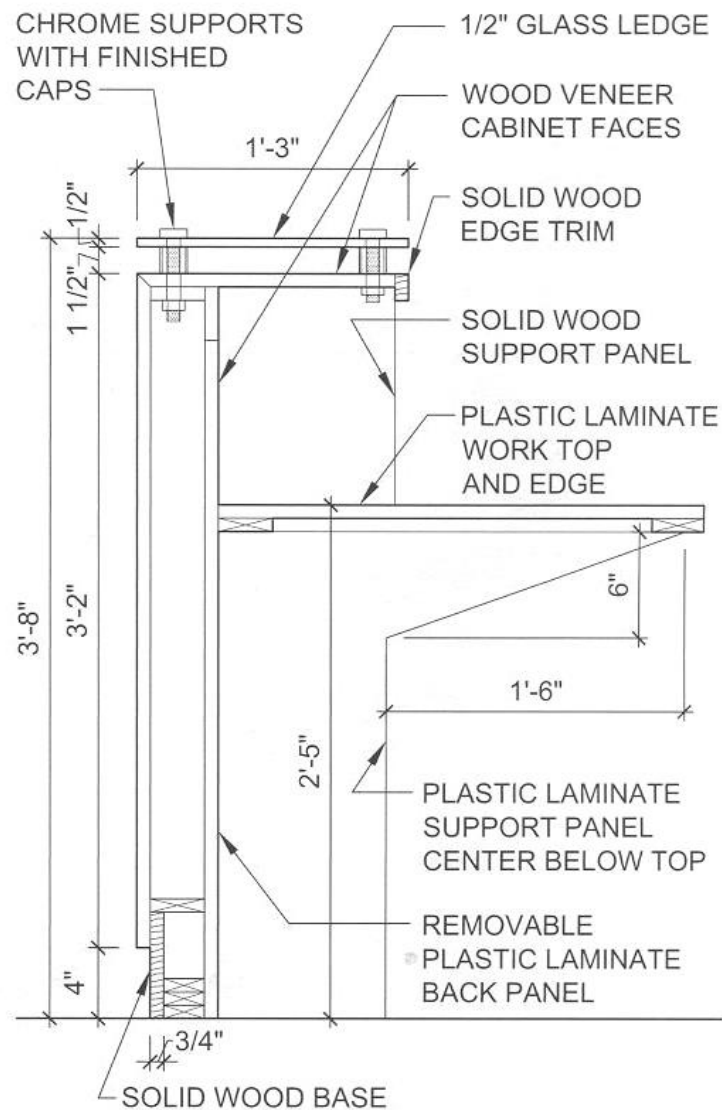
PLAN



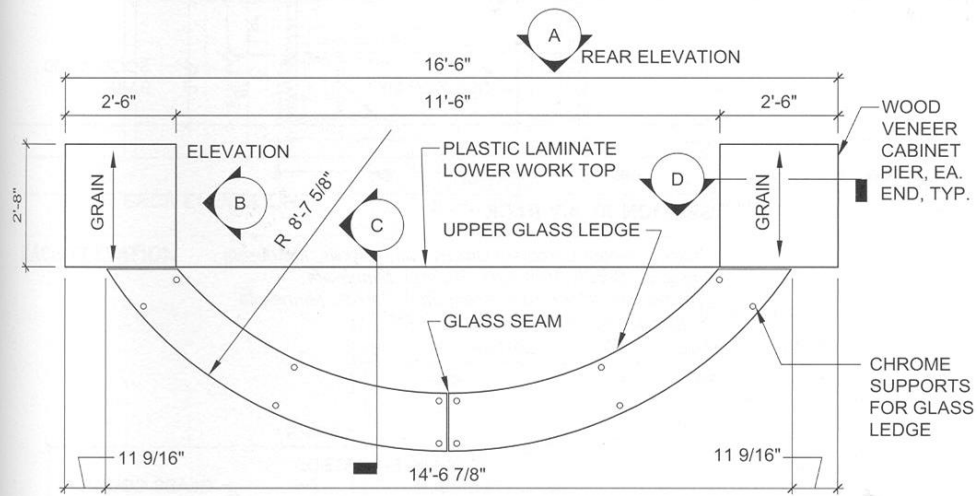
A
REAR ELEVATION



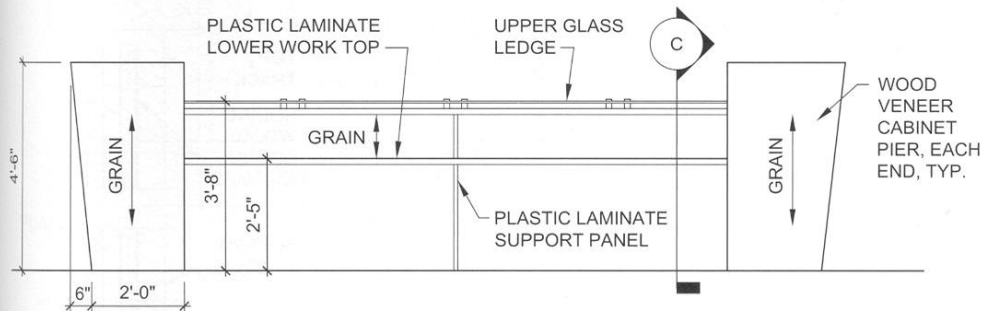
B
ELEVATION AT CABINET



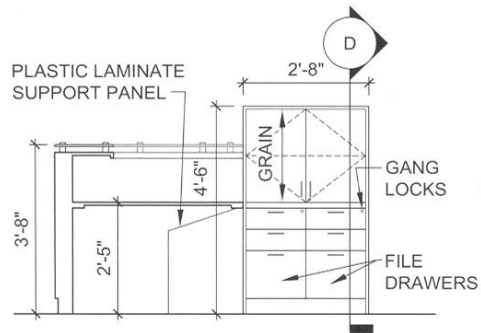
C
SECTION AT COUNTER



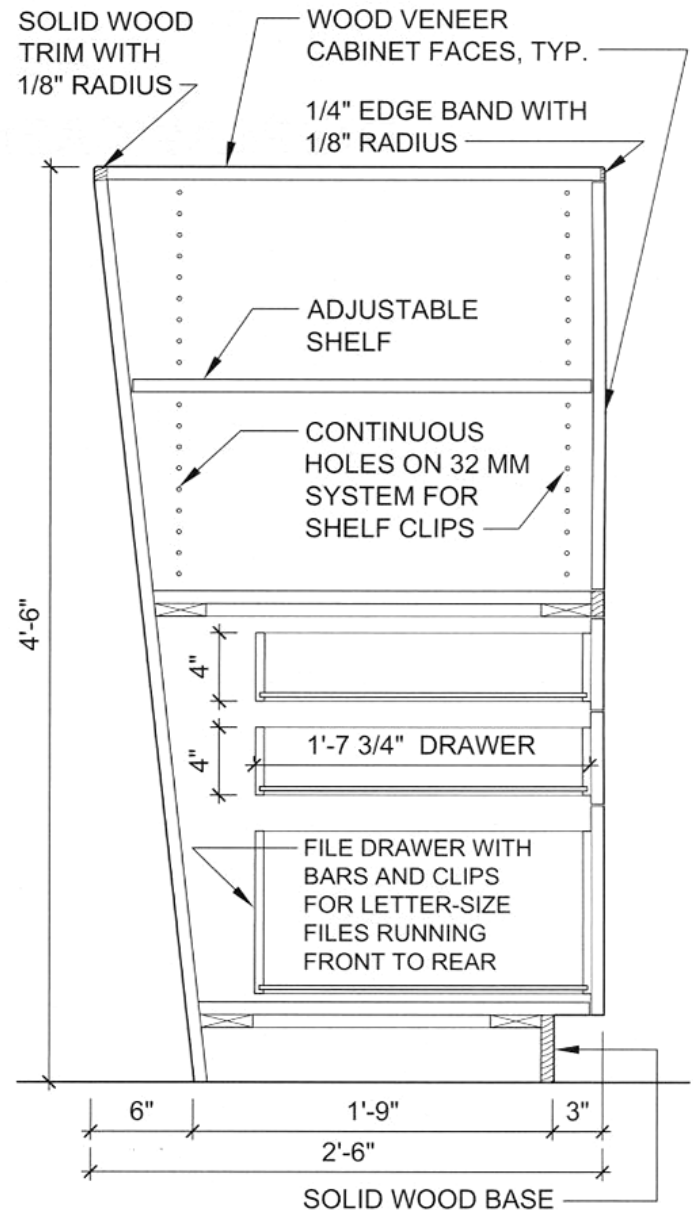
PLAN



A REAR ELEVATION



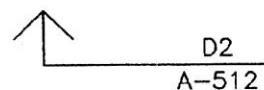
B ELEVATION AT CABINET



D SECTION AT CABINET

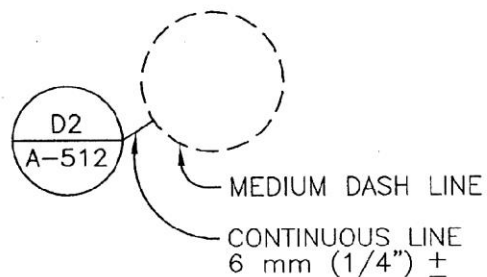
detail indicator for small
conditions, 45 degree arrow,
2.5 mm (3/32") text,
medium line

R



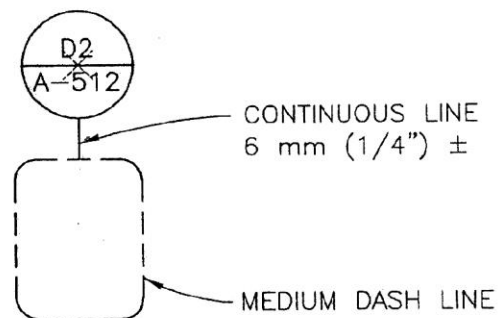
detail indicator, dashed circle,
2.5 mm (3/32") text, typical

R



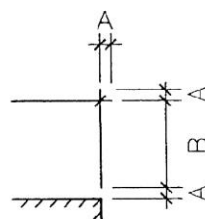
detail indicator,
dashed rectangle,
2.5 mm (3/32") text, typical

R



dimension line: continuous, thin
line with medium line for
terminator, typical

R



A = 1.5 mm (1/16")
B = 13 mm (1/2") (MINIMUM)
50 mm (2") (RECOMMENDED)